

3D Center Mark Training

3D Center Mark_Training.zip



3D Center Mark - Overview



Main Functions

- Inserts center marks on 3D view on a drawing
- Inserts dimensions on a referenced model
- Show/Hide center marks easily as adding them on extra layers

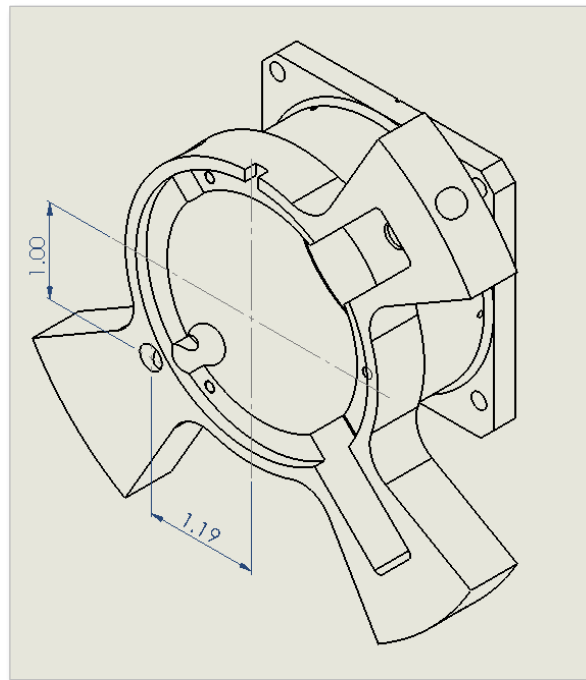
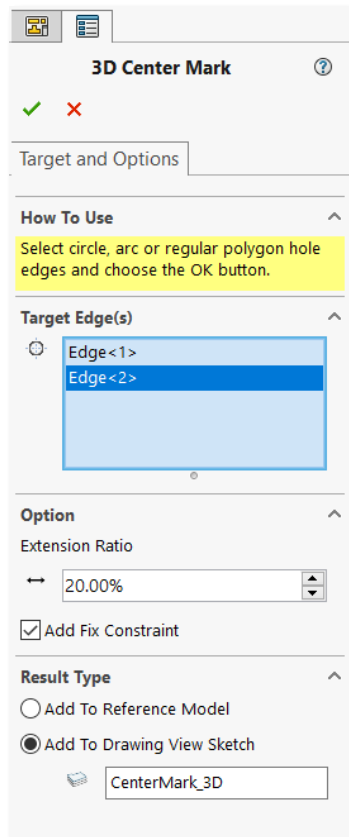


Benefits

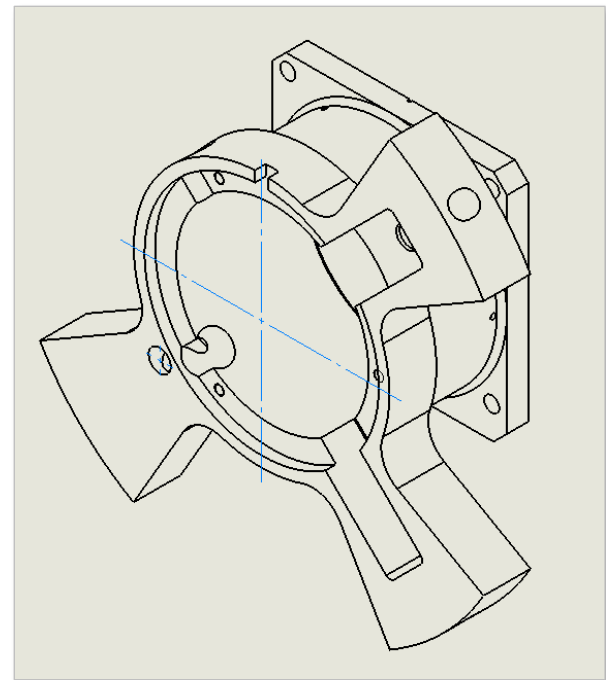
- No need to calculate the center manually
- Help users read the drawing better as center marks and dimensions marked on a drawing under 3D View.



Course Objective: Follow instructions through the course and learn how to use 3D Center Mark.



<Center Mark in Referenced model>

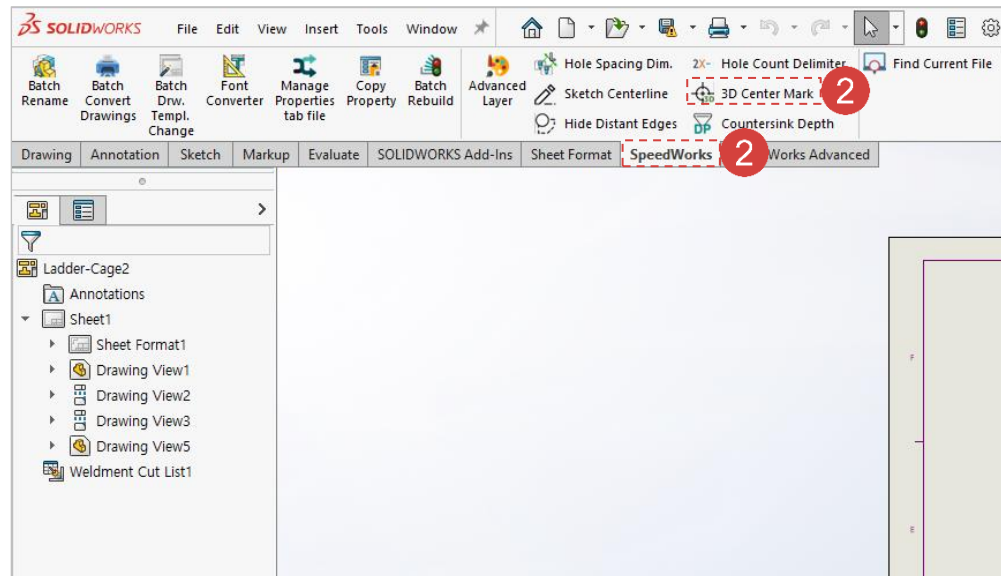
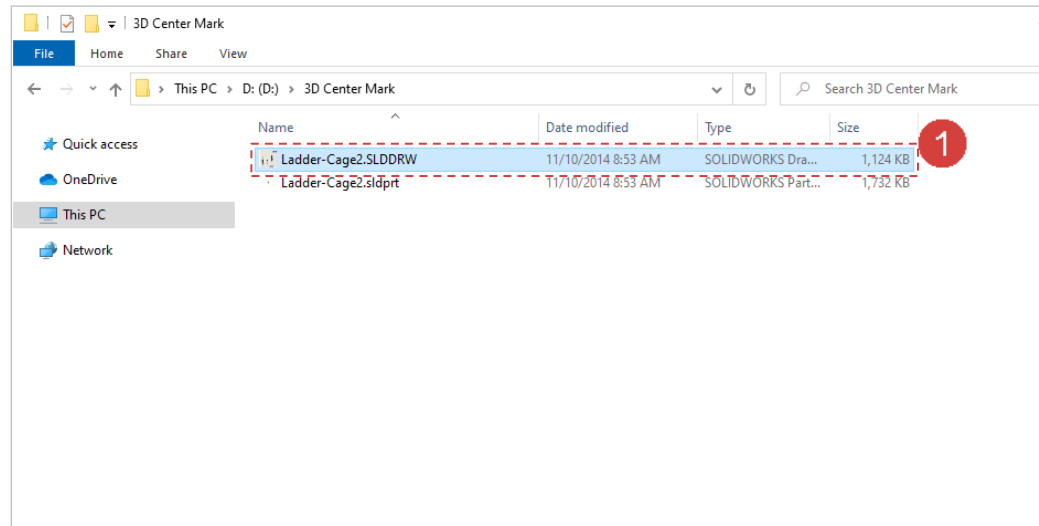


<Center Mark in Drawing sketch>

3D Center Mark - Execute

1 Execute **Ladder-Cage2.SLDDRW** file among example files.

2 Click **[SpeedWorks]tab - [3D Center Mark]** button to run the tool.



※ You can download example files at Support page in SpeedWorks Homepage(<https://speedworks.info>).

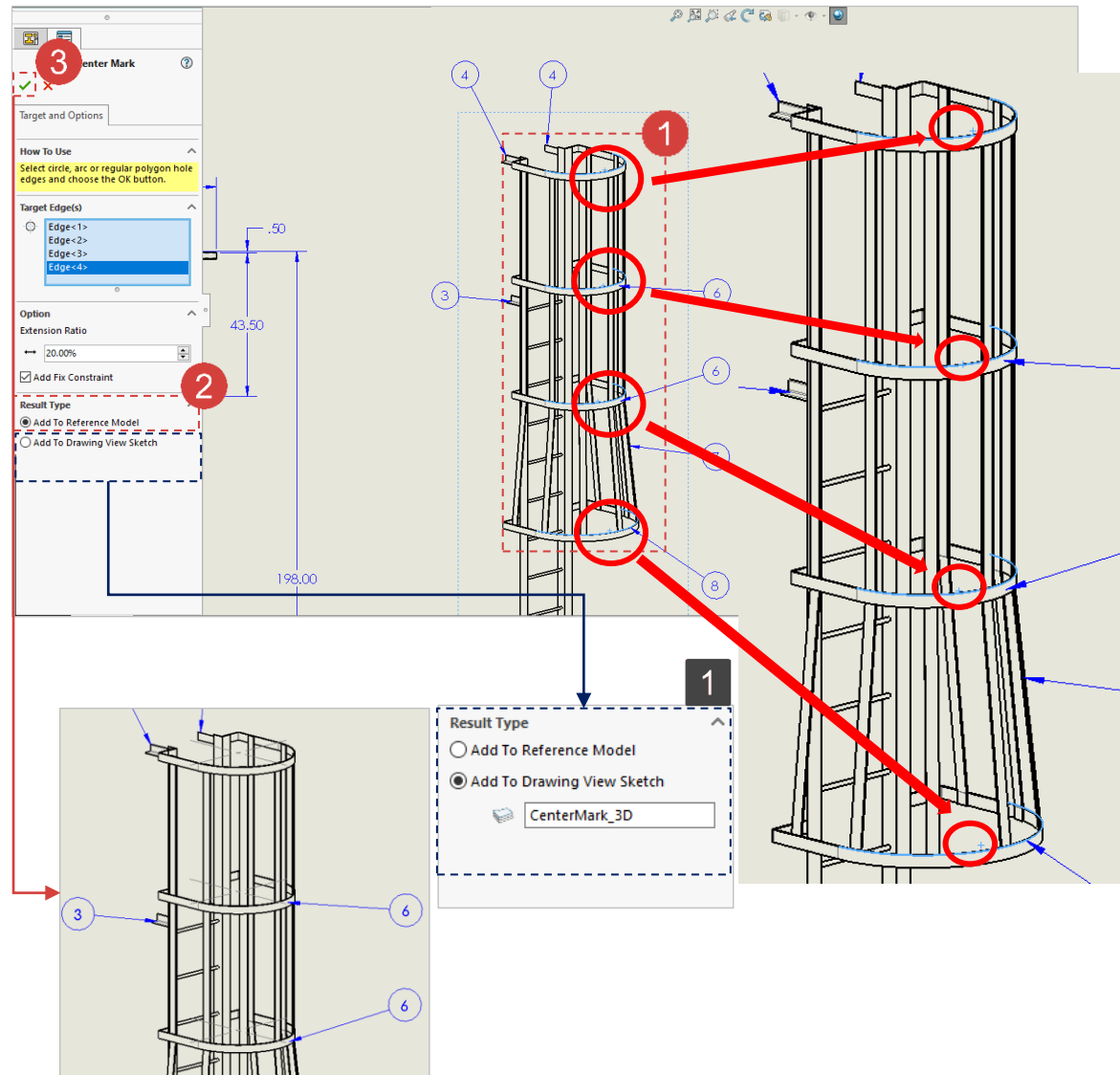
Work on the part with the red circle (1) following instructions by yourself.
The part with the black square (1) is an additional explanation or a reference.

3D Center Mark - Add Center Mark

Work on the part with the red circle (1) following instructions by yourself.
The part with the black square (1) is an additional explanation or a reference.

- 1 Select edges(Blue) inside red circles depicted in the picture while 3D Center Mark is running.
- 2 Users can select the options at [Result Type] to create a center marks being the sketch type at a referenced model or a drawing. In this example, check [Add to Reference Model] to add center marks to the referenced model.
- 3 Click [OK] button to add 3D center marks.

- 1 If users check [Add to Drawing Sketch View], users can select added layers. Center marks can be created even if users haven't specified layers.



3D Center Mark - Check Reference Model

Work on the part with the red circle (1) following instructions by yourself.
The part with the black square (1) is an additional explanation or a reference.

1 Do not close the file and execute **Ladder-Cage2.sldprt** file among example files.

2 If users open a part file and check Feature Manager, users will see **CenterLine-3D** has been added. Select **CenterLine-3D** by dragging it to check center marks inserted on the model.

